

**duratube**



**aster** S.r.l.

Contrada Dara 625/D  
91025 Marsala (TP)  
Italy(EU)

tel +39-0923-989177  
fax +39-0923-989648

[www.aster.cc](http://www.aster.cc)  
[aster@aster.cc](mailto:aster@aster.cc)



polyethylene  
pipe

series: outer Ø:  
1016 16.00 mm  
1020 20.00 mm

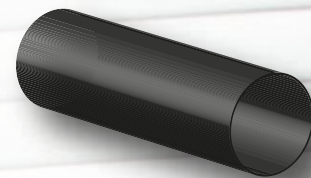
Colors: black, grey,  
brown and violet

## Pipe Specifications

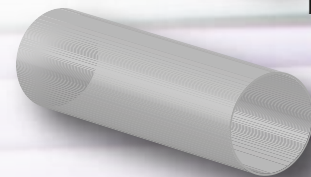
Nominal diameter	Outside diameter	Inside diameter	Wall thickness		Pressure max
	mm		MIL	mm	
<b>16</b>	<b>16.00</b>	14.20	<b>36</b>	0.90	2.50
		14.00	<b>40</b>	1.00	2.50
		13.80	<b>44</b>	1.10	3.00
		13.60	<b>48</b>	1.20	3.00
		13.40	<b>52</b>	1.30	3.30
		13.20	<b>56</b>	1.40	3.50
		13.00	<b>60</b>	1.50	3.80
		12.80	<b>64</b>	1.60	4.00
		12.60	<b>68</b>	1.70	5.00
<b>20</b>	<b>20.00</b>	18.20	<b>36</b>	0.90	2.00
		18.00	<b>40</b>	1.00	2.50
		17.80	<b>44</b>	1.10	3.00
		17.60	<b>48</b>	1.20	3.50
		17.40	<b>52</b>	1.30	3.50
		17.20	<b>56</b>	1.40	3.50
		17.00	<b>60</b>	1.50	4.00
		16.80	<b>64</b>	1.60	4.00
		16.60	<b>68</b>	1.70	5.00

## Polyethylene pipe

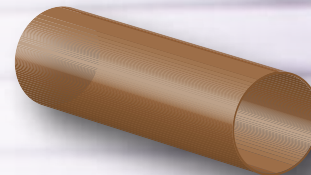
Series:  
1016 - 1020



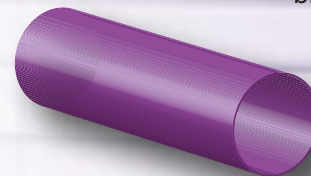
black



grey



brown



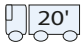



violet for non-potable water



Made with  
100% virgin  
raw materials

## Packaging & Shipping

Reel(m)		15	25	50	100	300	500
pallet (reels)		100	72	84	44	reel bulk	reel bulk
container (reels)		1.100	924	792	484	195	195
		2.200	1.848	1.584	968	390	390